

2002	Toshiba America Consumer Products, Inc.	Date: 01/29/2002
Product	Technical Bulletin	TV0201
PJTV		Ref. No. 012902

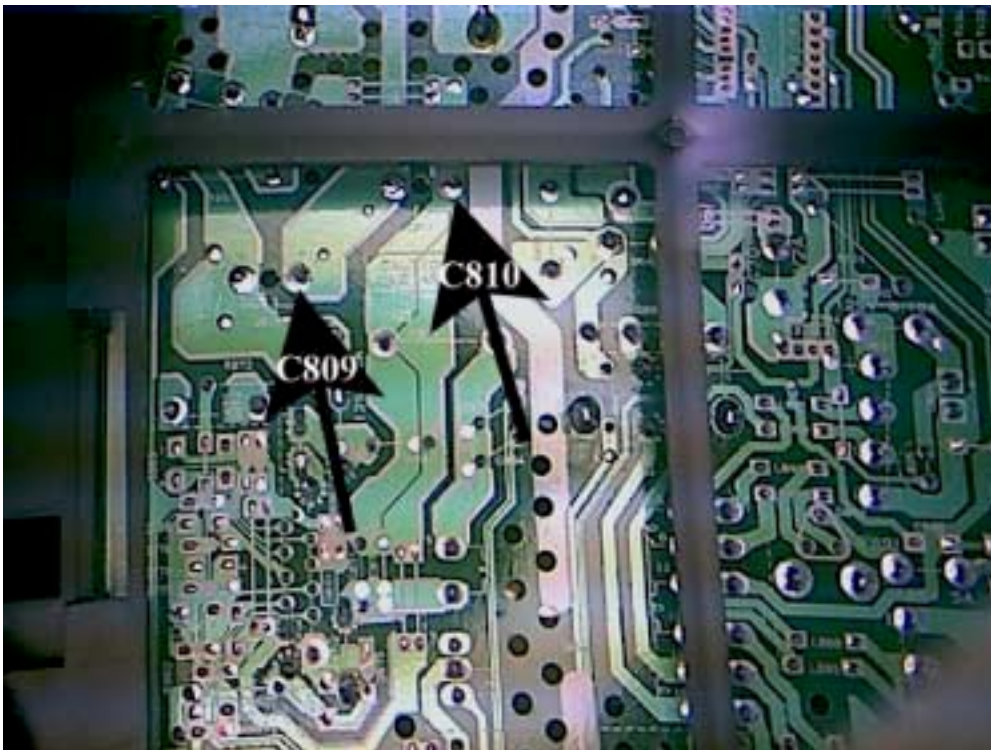
Models:

42H81	43H71	43HX71	50H71	50H81
50HX81	53H71	53HX71	57H81	57HX81
61H71	65H81	65HX81		

Application: The information within this bulletin should only be used if you encounter the symptom(s) listed.

Symptom: Power LED lights. Power supply does not start.

Corrective Action: Check the solder connections at the negative side of both C809 and C810. Resolder if necessary. Poor connections could possibly open fuse F860. Check the fuse and replace if necessary.



Product Safety Precautions:

Product Safety Precautions are described in the Toshiba service manual(s) covered in this bulletin. All safety precautions and checks shall be complied with before returning the equipment to the customer. Servicers who defeat safety features or fail to perform safety checks may be liable for any resulting damages and may expose themselves and others to possible injury.

2002	Toshiba America Consumer Products, Inc.	Date: 01/29/02
Product	Technical Bulletin	TV0202
PJTV		Ref. No. 012902

Models:

42H81	43H71	43HX71	50H71	50H81
50HX81	53H71	53HX71	57H81	57HX81
61H71	65H81	65HX81		

Application: The information within this bulletin should only be used if you encounter the symptom(s) listed.

Symptom: Televisions in close proximity to the above listed models may display a noisy or distorted picture when tuned to Channel 4 or Channel 5. The symptom disappears when the above unit is powered OFF.

Corrective Action:

Install the EMI suppression filter – Toshiba P/N FERICORE – according to the following instructions:

1. Remove the front panel to gain access to the CRTs. Refer to the appropriate service manual for disassembly instructions.
2. Locate the six-pin plug P709B on the Blue SVM board (PD0080-6). The SVM board is mounted on the CRT neck below the deflection yoke.
3. Locate the wire to pin 5 of P709B.
4. Install the EMI filter (FERICORE) by crimping it around the wire.
Note: The filter will not lock into place. It will slide along the wire or spin if rotated.
5. Check the unit for normal operation. Verify the unit no longer causes interference with other units.
6. Reassemble the unit as described in the appropriate Service Manual.

Product Safety Precautions:

Product Safety Precautions are described in the Toshiba service manual(s) covered in this bulletin. All safety precautions and checks shall be complied with before returning the equipment to the customer. Servicers who defeat safety features or fail to perform safety checks may be liable for any resulting damages and may expose themselves and others to possible injury.

TECHNICAL BULLETIN

No: **TV-200203**
Product: **TV**

3 pages

Date: **Mar 20, 2002**
Ref: **01A-200203**

Models: **34HF81**
34HF81C

Product Safety Precautions:

Product Safety Precautions are described in the Toshiba service manual(s) for models covered in this bulletin. All safety precautions and checks shall be complied with before returning the equipment to the customer. Servicers who defeat safety features or fail to perform safety checks may be liable for any resulting damages and may expose themselves and others to possible injury.

Application: The information contained in this bulletin applies only if you encounter the symptom(s) listed below.

Subject: Stabilize Q302 feedback circuit.

Symptom: Vertical line bends or doubles for 2 seconds after switching on set.

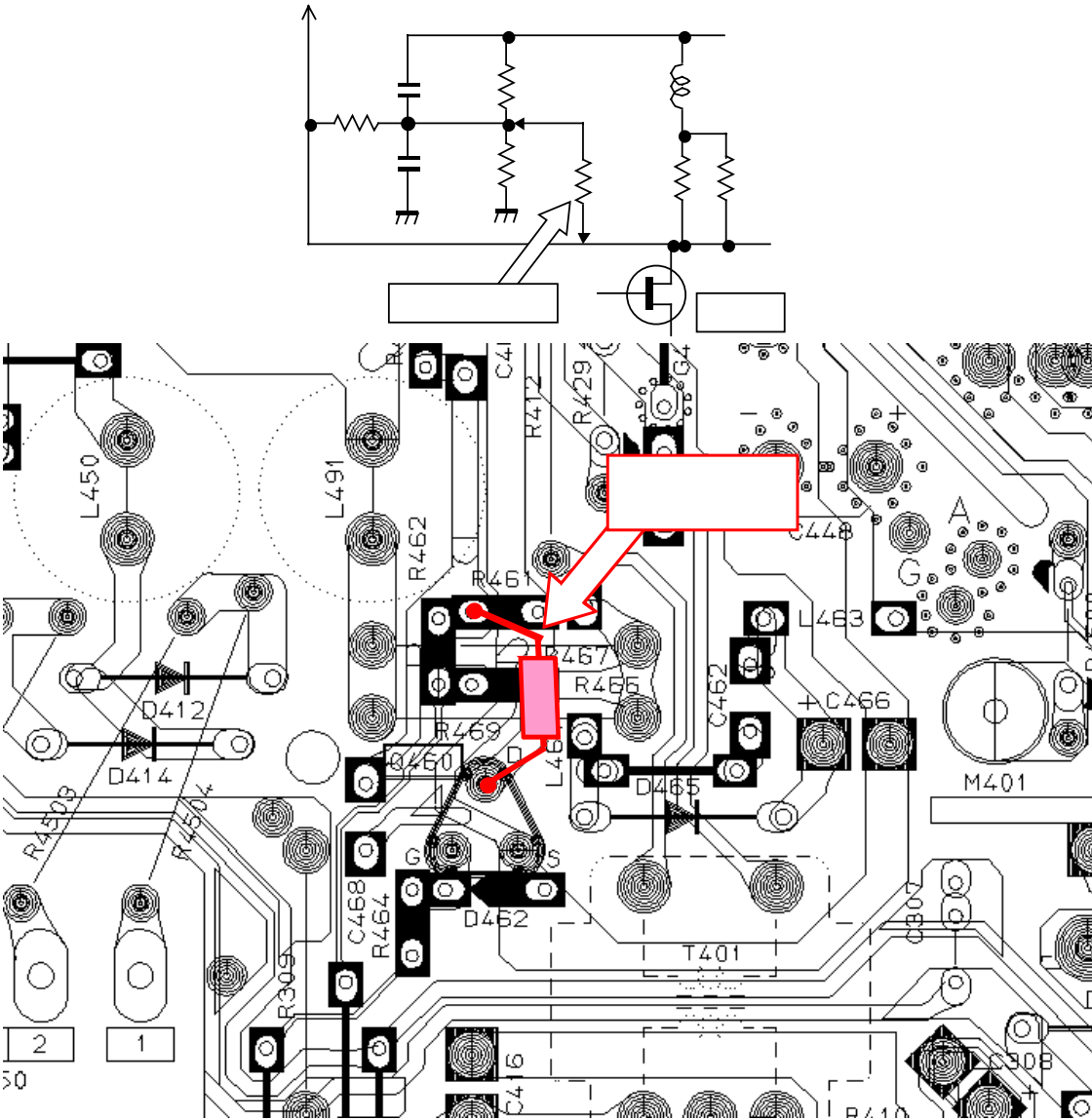
Corrective Action:

Add two resistors (R463, R4703) and change one capacitor (C4693) to stabilize Q302 feedback circuit.

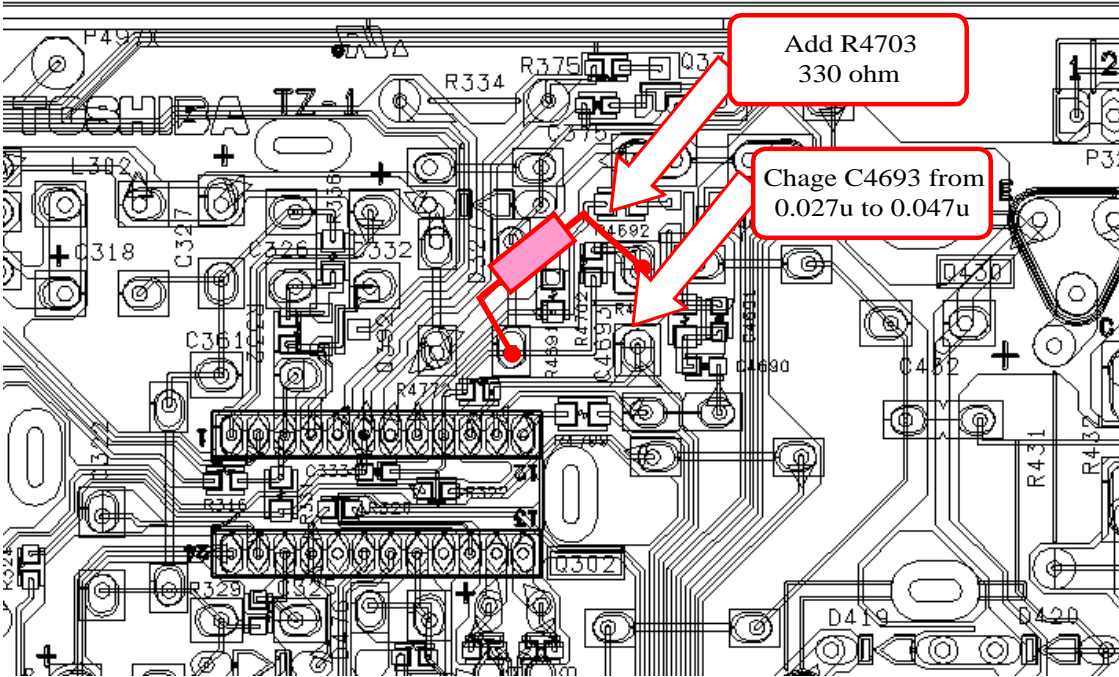
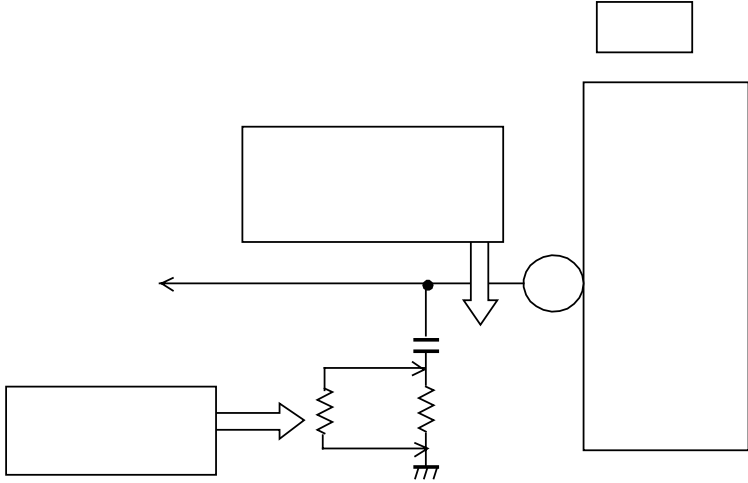
Location	Part Number	Description
R463 (new)	24366473	Resistor, Carbon film, 47K Ω , 1/6 W
R4703 (new)	24366331	Resistor, Carbon film, 330 Ω , 1/6 W
C4693 (change to)	24591473	Capacitor, Plastic film, 0.047 MFD, 50V

See attached illustrations.

POW/DEF board



Vertical board





TOSHIBA AMERICA CONSUMER PRODUCTS, INC.
NATIONAL SERVICE DIVISION
1420-B TOSHIBA DR.
LEBANON, TN 37087

TECHNICAL BULLETIN

No: **TV 200204**
Product: **PJTV**

1 page

Ref: **02A-200208**
Date: **5/14/02**

Models: 42H81, 43H71, 43HX71, 50H71, 50H81, 50HX81, 53H71, 53HX71, 57H81, 57HX81, 61H71, 65H81 and 65HX81 having serial numbers beginning with: 14, 15, 17, 18, 19, 20, 21, 22, 25, 29, 31, 37, 39, 42, 50, 58, 60, 64, 70, or 75.

Product Safety Precautions:

Product Safety Precautions are described in the Toshiba service manual(s) for models covered in this bulletin. All safety precautions and checks shall be complied with before returning the equipment to the customer. Servicers who defeat safety features or fail to perform safety checks may be liable for any resulting damages and may expose themselves and others to possible injury.

Application: The information contained in this bulletin applies only if you encounter the symptom(s) listed below.

Subject: No eyelet on circuit board at negative terminal of C809 and/or C810.
Possible dry solder joint may cause main fuse to blow.

Symptom: Main fuse (F801) blows

Corrective Action: Re-solder negative terminals of C809/C810. Make sure negative terminal of C809 and/or C810 makes a firm connection.

TECHNICAL BULLETIN

No: **TV 200205**
 Product: **CTV**

1 page

Ref: **S02A-200202**
 Date: **5/14/02**

Models: **32HFX71, 34HF81, 36HF71, 36HFX71**

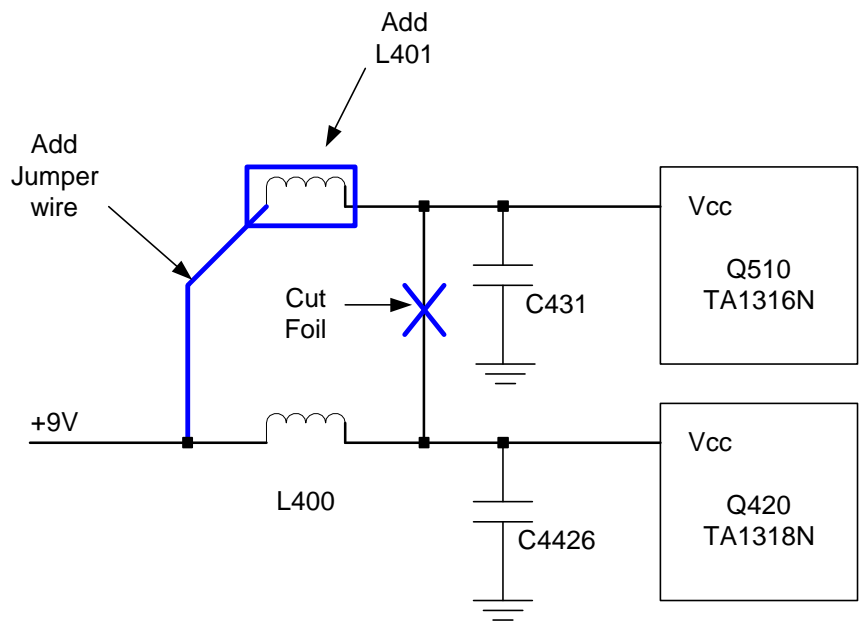
Product Safety Precautions:
 Product Safety Precautions are described in the Toshiba service manual(s) for models covered in this bulletin. All safety precautions and checks shall be complied with before returning the equipment to the customer. Servicers who defeat safety features or fail to perform safety checks may be liable for any resulting damages and may expose themselves and others to possible injury.

Application: The information contained in this bulletin applies only if you encounter the symptom(s) listed below.

Symptom: Wavy vertical line when room temperature is below 32° F (0° C.)

Corrective Action: Add peaking coil (L401) into Vcc line of Q510 (TA1316N). Add jumper wire and cut foil pattern as shown below.

Location	Part Number	Description
L401 (New)	23280022	Coil, TRF4101AZ





TOSHIBA AMERICA CONSUMER PRODUCTS, INC.
NATIONAL SERVICE DIVISION
1420-B TOSHIBA DR.
LEBANON, TN 37087

TECHNICAL BULLETIN

No: **TV 200206**
Product: **CTV**

1 page

Ref: **020-200103**
Date: **09/09/2002**

Models: **27AF41, 27AF61**

Product Safety Precautions:

Product Safety Precautions are described in the Toshiba service manual(s) for models covered in this bulletin. All safety precautions and checks shall be complied with before returning the equipment to the customer. Servicers who defeat safety features or fail to perform safety checks may be liable for any resulting damages and may expose themselves and others to possible injury.

Application: The information contained in this bulletin applies only if you encounter the symptom(s) listed below.

Subject: Correction to Service Manual (file no. 020-200103, Page 17, Table-3).

Corrective Action: Correct the Design Mode Option data as follows:

Item	Name of adjustment	27AF41	27AF61
OPT0	OPTION 0	22H	20H
OPT1	OPTION 1	84H	04H
OPT2	OPTION 2	81H	81H

TECHNICAL BULLETIN

No: **TV 200207**
Product: **PJTV**

1 page

Ref: **ECNP2841**
Date: **10/08/2002**

Models: **42H82, 42HDX82, 50H82, 50HDX82, 57H82, 57HDX82, 65H82, 65HDX82**

Product Safety Precautions:

Product Safety Precautions are described in the Toshiba service manual(s) for models covered in this bulletin. All safety precautions and checks shall be complied with before returning the equipment to the customer. Servicers who defeat safety features or fail to perform safety checks may be liable for any resulting damages and may expose themselves and others to possible injury.

Application: The information contained in this bulletin applies only if you encounter the symptom(s) listed below.

Subject: Circuit modification.

Symptom: Audible white noise (static hiss) at low volume levels.

Corrective Action: Add 2.2uf/50V electrolytic capacitor (PN 24617912) between Wout (pin 6) and GND (pin 8) of PD01B on SRS3D A-Pro/SRS WOW PCB (UD01).



TECHNICAL BULLETIN

No: **TV 200208**
Product: **PJTV**

1 page

Ref: **JK-71002**
Date: **09/09/2002**

Models: **50HX81, 57HX81, 65HX81**

Product Safety Precautions:

Product Safety Precautions are described in the Toshiba service manual(s) for models covered in this bulletin. All safety precautions and checks shall be complied with before returning the equipment to the customer. Servicers who defeat safety features or fail to perform safety checks may be liable for any resulting damages and may expose themselves and others to possible injury.

Application: The information contained in this bulletin applies only if you encounter the symptom(s) listed below.

Subject: Repair of control panel door.

Symptom: Complete or partial detachment of decorative aluminum cover.

Corrective Action:

1. If the decorative aluminum is partially attached, remove it by sliding a knife blade between the aluminum and plastic. Do not to bend the plastic door (P/N 23427971).
2. Make sure the plastic door will close without binding. The spring (P/N 23836567) must be positioned correctly for the door to function.
3. Apply the double-sided adhesive tape (P/N 9472LE3M) along the length of the aluminum. Position the tape so that it does not overhang the sides.
4. Open the plastic door and carefully re-position the aluminum.
5. To avoid damage to the door hinge, attach the aluminum by pressing it and the plastic firmly between the fingers.
6. Allow the tape adhesive to set properly by leaving the door open for one hour.
7. Check the function of the door by opening and closing several times.
8. Clean the door surface.

TECHNICAL BULLETIN

No: **TV 200209**
Product: **PJTV**

1 page

Ref: **TS103002**
Date: **10/30/2002**

Models: **42H82, 42HDX82, 50H82, 50HDX82, 57H82, 57HDX82, 65H82, 65HDX82**

Product Safety Precautions:

Product Safety Precautions are described in the Toshiba service manual(s) for models covered in this bulletin. All safety precautions and checks shall be complied with before returning the equipment to the customer. Servicers who defeat safety features or fail to perform safety checks may be liable for any resulting damages and may expose themselves and others to possible injury.

Application: The information contained in this bulletin applies only if you encounter the symptom(s) listed below.

Symptoms:

1. **HDX82 series:** Loss of red in video.
2. **HDX82 series:** Part number not included in Service Manual Replacement Parts list.
3. **H82 series:** The H82 series CRT drive boards differ from those shown in the schematic diagrams. Q9170 is not used in the series.

Corrective Action:

1. **HDX82 series:** Replace defective Q9170 on red CRT drive board. Type 2SA1015Y; Toshiba PN BZ510034.
2. **HDX82 series:** Update the appropriate Service Manual(s) Replacement Parts list to include the correct part number.
3. **H82 series:** Update the appropriate Service Manual to include the correct CRT drive board schematic diagram. The correct diagram is included as Pages 2 and 3 of this Technical Bulletin.

A

B

C

D

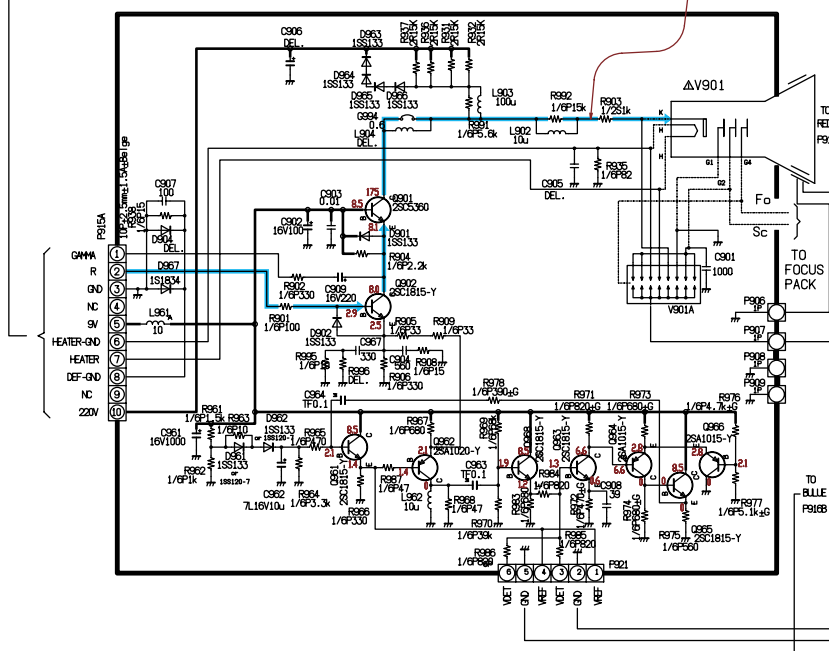
E

F

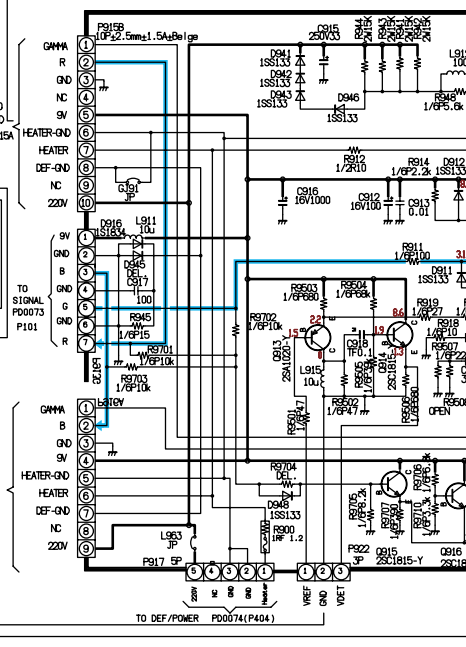
G

H

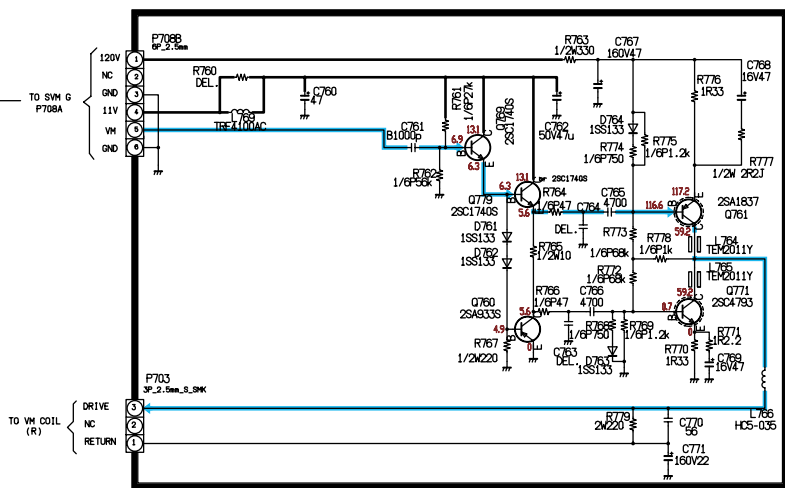
CRT-D/R



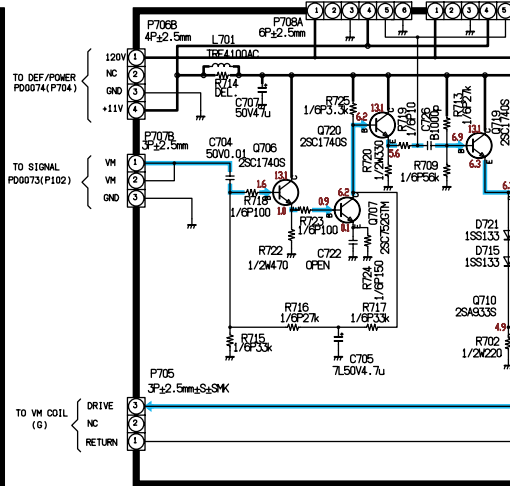
CRT-D/G



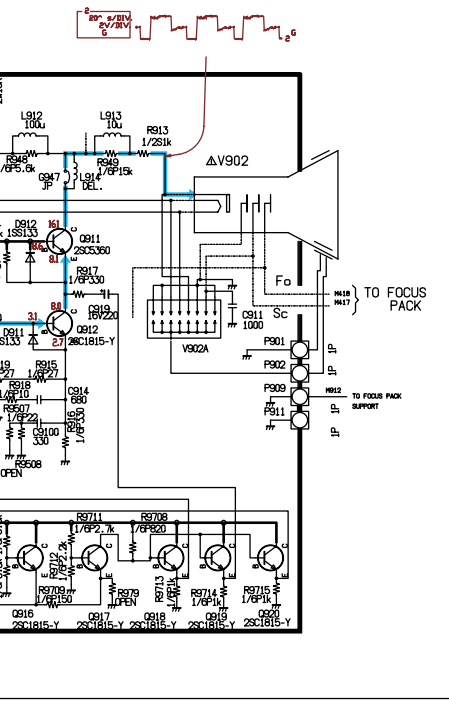
SVM/R



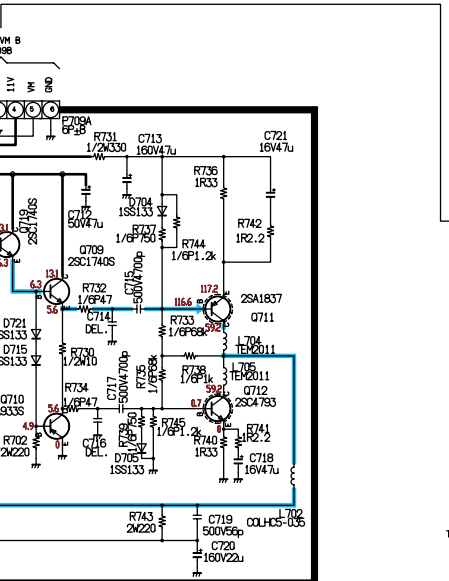
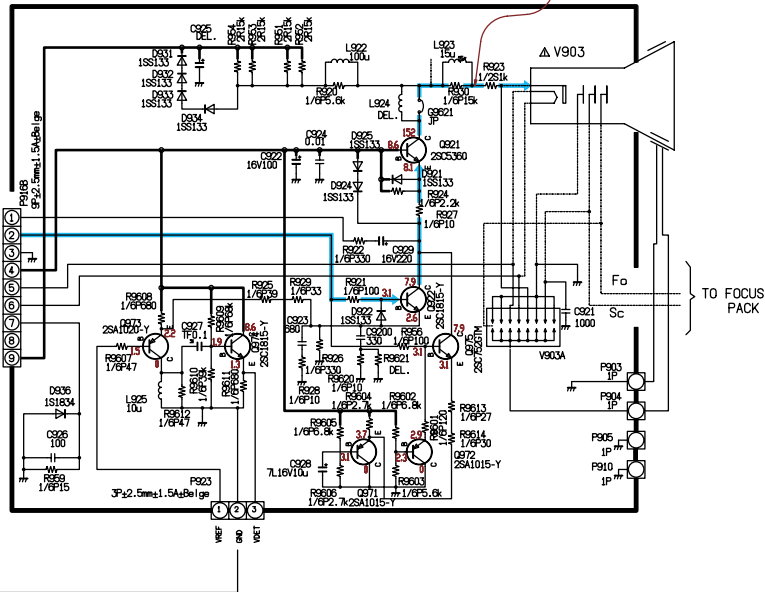
SVM/G



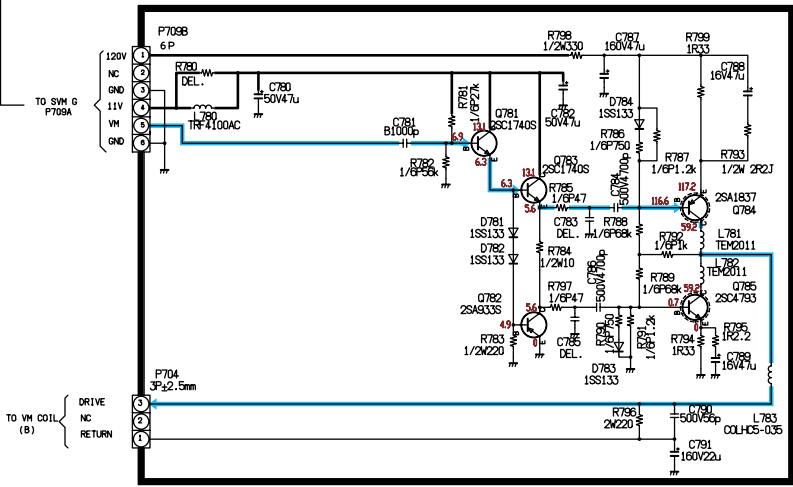
A
B
C
D
E
F
G
H



CRT-D/B



SVM/B



CRT/SVM
N2PSP Series